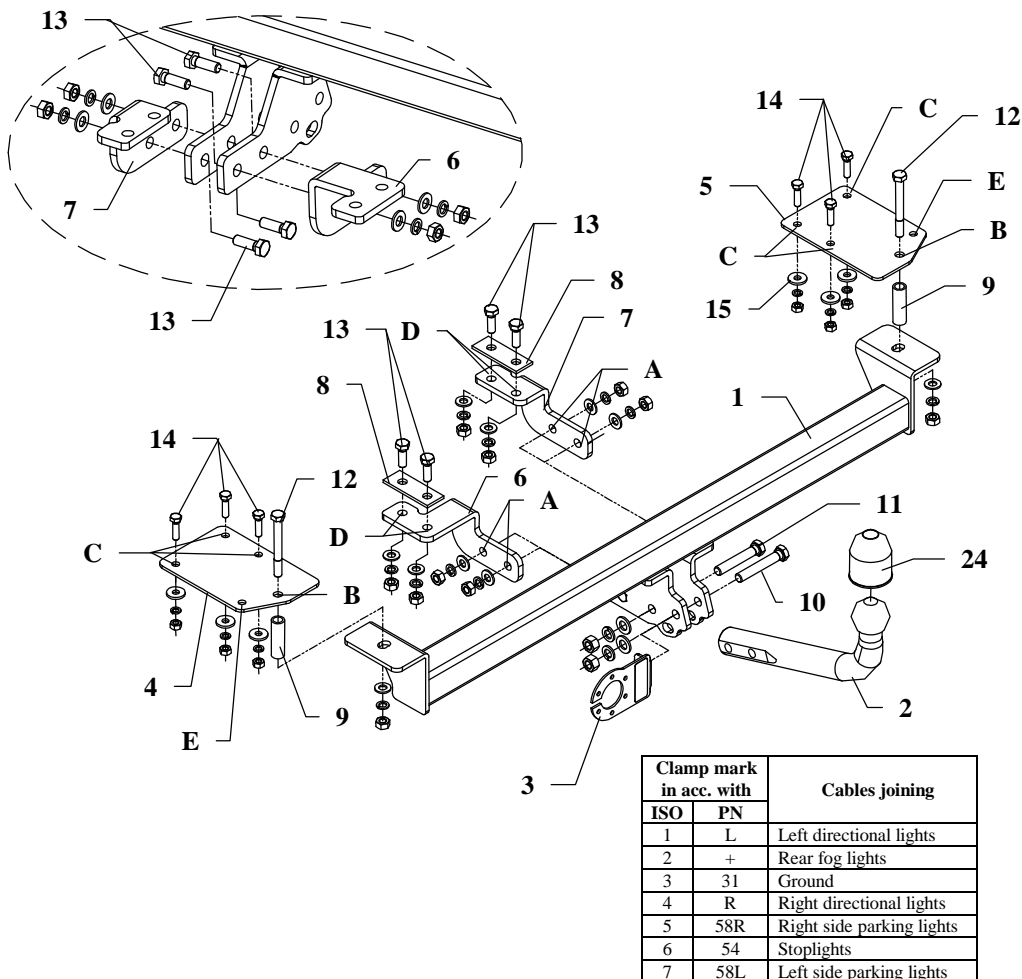


FITTING INSTRUCTION



This towbar is designed to assembly in following cars:
FIAT BRAVA, 5 doors, produced since 1995 till 2001, catalogue no. **R09**
 and is prepared to tow trailers max total weight **1400 kg** and max vertical load **75 kg**.

From manufacturer

Thank you for buying our product. Their reliability has been confirmed in many tests. Reliability of towbar depends also on correct assembly and right operation. For this reasons we kindly ask to read carefully this instruction and apply to hints.

The towbar should be install in points described by a car producer.

The instruction of the assembly

1. Disassemble the bumper. After take out a spare wheel, disassemble covers and take out a fitted carpet from the trunk. Unscrew bolts M8 on the right and on the left side, which fit handles.
2. Through the holes (pos. A) with bolts M10x30mm (pos. 13) fix angle brackets to the main bar of the towbar (pos. 1) as show on the drawing.
3. In the trunk (on the right and left side) put the elements (pos. 4 and 5) and through existing holes fit it using bolts M10x90mm (pos. 12) from the towbar accessories.
4. In bottom part of car in existing holes $\varnothing 17\text{mm}$ (in longitudinal members) put distance sleeves (pos. 9) from accessories and next put the main bar of the towbar (pos. 1) and fix it through holes (pos. B) with bolts M10x90mm (pos. 12) - moderate tight.
5. Temporarily with bolts M8 arrange fish-plates in points (pos. E) and through holes (pos. C) drill holes ($\varnothing 9\text{mm}$) in floor of the trunk.
6. Through made holes fix elements with bolts M8x30mm (pos. 14). Use circular washers (pos. 15) from accessories.
7. From below of the car through holes (pos. D) drill holes with bit $\varnothing 11\text{mm}$ to the trunk and next fix with bolts M10x30mm (pos. 13) using square fish-plates (pos. 8) from the accessories.
8. Fix tow-ball (pos. 2) and socket plate (pos. 3) using bolts M12x75mm (pos. 10) and M12x70mm (pos. 11) from accessories.
9. Tighten all bolts according to the torque shown in the table.
10. Install PCV covers and fitted carpet. Next with bolts M8 fix handles through holes in plate (pos. E).
11. Connect electric wires of 7-poles socket according to the instruction of the car. (Recommend to make at authorized service station).
12. Complete paint layer damaged during installation.

Torque settings for nuts and bolts (8,8):	
M 8 - 25 Nm	M 10 - 55 Nm
M 12 - 85 Nm	M 14 - 135 Nm

NOTE

After install the towbar you should get adequate note in registration book (at authorised service station).The car should be equipped with:

- Indicators
- Tow mirrors

Check all bolts and nuts after 1000km of exploitation. The ball of towbar must be always kept clear and conserve with a grease.

Towbar accessories:

Pos. 1 Main bar PCS.: 1	Pos. 6 Angle bracket I PCS.: 1	Pos. 12 Bolt 8,8 B M10x90mm PCS.: 2	Pos. 18 Spring washer ø12,2mm PCS.: 2
	Pos. 7 Angle bracket II PCS.: 1	Pos. 13 Bolt 8,8 B M10x30mm PCS.: 8	Pos. 19 Spring washer ø10,2mm PCS.: 10
Pos. 2 Tow ball PCS.: 1	Pos. 8 Fish-plate PCS.: 1	Pos. 14 Bolt 8,8 B M8x30mm PCS.: 6	Pos. 20 Spring washer ø8,2mm PCS.: 6
Pos. 3 Socket plate PCS.: 1	Pos. 9 Distance sleeve PCS.: 2	Pos. 15 Plain washer ø24xø8,4x2mm PCS.: 6	Pos. 21 Nut 8 B M12 PCS.: 2
Pos. 4 Left fish-plate PCS.: 1	Pos. 10 Bolt 8,8 B M12x75mm PCS.: 1	Pos. 16 Plain washer ø13mm PCS.: 2	Pos. 22 Nut 8 B M10 PCS.: 10
Pos. 5 Right fish-plate PCS.: 1	Pos. 11 Bolt 8,8 B M12x70mm PCS.: 1	Pos. 17 Plain washer ø10,5mm PCS.: 10	Pos. 23 Nut 8 B M8 PCS.: 6
			Pos. 24 Ball cover PCS.: 1



PPUH AUTO-HAK S.J.

Produkcja Haków Holowniczych
Henryk & Zbigniew Nejman
76-200 SŁUPSK ul. Słoneczna 16K
tel/fax (059) 8-414-414; 8-414-413
E-mail: office@autohak.com.pl
www.autohak.com.pl

Towing hitch (without electrical set)

Class: **A50-X** Cat. no. **R09**

Designed for:

Manufacturer: **FIAT**

Model: **BRAVA**

Type: **5 doors**

produced since 1995 till 2001

Technical data:

D-value: 7,9 kN

maximum trailer weight: **1400 kg**

maximum vertical cup load: **75 kg**

Approval number acc. to regulations EKG/ONZ 55.01: E20-55R-01 1332

Foreword

This towbar is designed according to rules of safety traffic regulations. The towing hitch is a safety component and can be install only by qualified personnel. Any alteration or conversion of the towing hitch is prohibited and would lead to cancellation of design certification. Remove insulating compound and underseal from vehicle (if present) in the area of the matting surfaces of the towing hitch.

The vehicle manufacturer's specifications regarding trailer load and max. vertical cup load are decisive for driving whereat values for the towing hitch cannot be exceeded.

D-value formula:

$$\frac{\text{Max trailer weight [kg]} \times \text{Max vehicle weight [kg]}}{\text{Max trailer weight [kg]} + \text{Max vehicle weight [kg]}} \times \frac{9,81}{1000} = D \text{ [kN]}$$